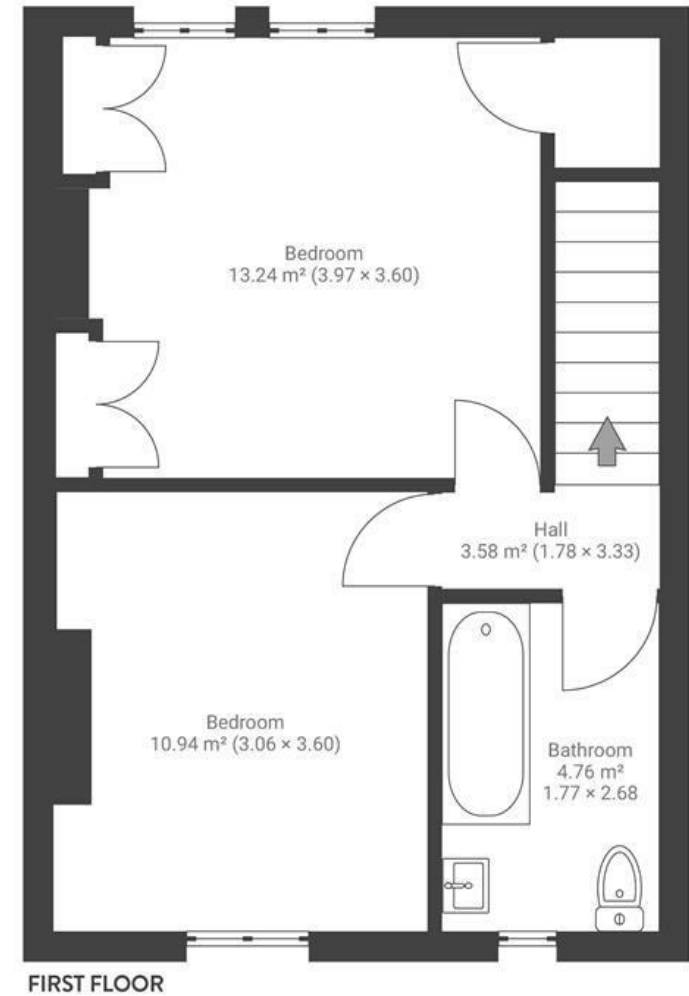
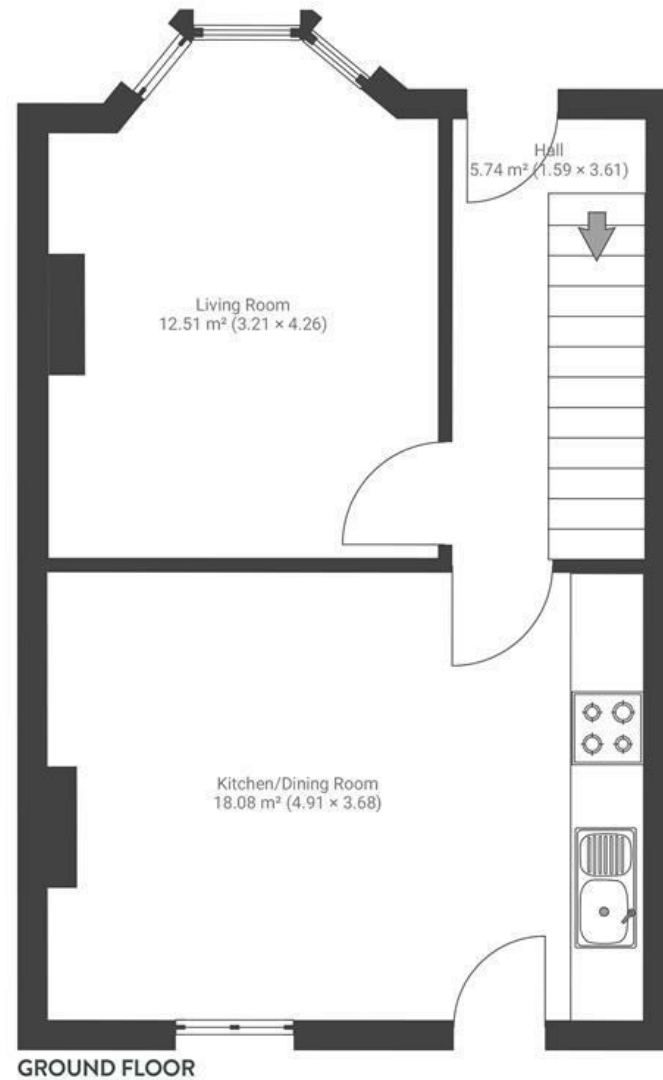


Highworth Road

ST ANNE'S

APPROXIMATE FLOOR AREA
74 SQM / 797 SQFT



Boardwalk

Highworth Road , BRISTOL

£

£385,000

zZz

2 Bedrooms



BS4 4AQ



1 Bathrooms

"Mornings here are my favourite, the light comes in really nicely and it feels so peaceful before the day gets going. I usually sit with a coffee in the garden and enjoy the quiet for a bit, before heading out to one of the many green spaces for a dog walk. It's a simple routine, but one I know I'll really miss especially with the garden."

